



Kyocera SMARTtech:

Take greater command of your business with a lower total cost of ownership.

Designed with you in mind, the **Copystar CS 255c/205c color multifunctional systems with SMARTtech** (Simple Management and Replacement Technology) assure **simple-to-operate and simple-to-manage** MFP functionality. Ideal for virtually every busy office and workgroup, especially round-the-clock document environments, highly secure offices and satellite locations. And thanks to Kyocera's SMARTtech design, when service is required interruption to your business activities is minimal, to ensure maximum uptime when you need it most. Now your business can **print, scan, and copy, in color and black & white or fax...** all within your budget thanks to one of the **lowest Total Cost of Ownership MFPs in its class.**

The Copystar CS 255c/205c... Built by Copystar, Inspired by You.

Simple has never been so smart

Fast Superior Color Imaging for a Solid Impression

These compact devices offer productive print speeds of 25 and 20 pages per minute in color and black & white, depending on device model.

Print, Copy, Scan and Optional Fax

The CS 255c/205c handles all your document needs, printing, copying, scanning and even sending/receiving faxes if you need it. Producing brilliant, spectacular color for print and copy runs, these MFPs are ideal for producing reports, presentations, and spreadsheets in-house and on-demand. And our high yield toner saves with cost-efficient output for everyday document needs.

Simple to Operate

Featuring an easy-to-read, bright LCD Screen that puts robust document handling and powerful features at your fingertips.

Small Footprint

The stylishly designed, smooth-edged CS 255c/205c MFPs harmonize with many contemporary office environments, with a small, space-saving footprint that offers greater flexibility and freedom in terms of device placement and installation.

Business critical information is secure and never compromised

SMARTtech adds a level of safety and security

Ideal for highly sensitive environments, these devices are powered by a standard 1GB of Random Access Memory (RAM), so there is no hard disk drive that can be breached by unauthorized personnel. Once the device is turned off, all resident data is eliminated. Utilizing Kyocera's software tools administrators can easily manage and track these devices across their network.

Secure Print Feature

Whether at the device or at a desktop, users can retrieve critical and confidential documents only after entering a secure PIN.

Integration with Secure Identity Solutions

SMARTtech MFPs can be configured with Kyocera's Card Authentication Solution to limit physical access to the device using local authentication HID/Proximity Card technology.

Integration with Active Directory

Administrators and compliance officers can integrate the CS 255c/205c with an organization's Active Directory, further assuring that only personnel with proper access credentials can utilize the MFPs.

The budget-conscious CS 255c/205c MFPs



Long Life Consumables

Kyocera's award-winning technology incorporates long life imaging components that can dramatically lower your total cost, while providing high productivity and exceptional color image quality.



Easy Operation Control Panel

Loaded with user-friendly capabilities that put robust document handling and powerful features at your fingertips, plus On-board Help Guidance, 'Favorites,' and our unique Document Box.



Feature Rich Color MFPs

Ask about the wide array of features, both standard and optional. With a standard USB Host Interface, optional 500 sheet multi-position finisher and robust paper handling the CS 255c/205c provide the features you need most.



Budget-Friendly

The highly-affordable CS 255c/205c benefits from Kyocera's long-life components and ultra-reliability, bringing a whole new meaning to low total cost of ownership.



Secure RAM-Based Memory

Designed with security as a priority, there is no hard drive on these MFPs, reducing the security risk. Once the device is turned off, all resident data is eliminated. The standard 1GB of RAM is upgradeable to 2GB.



Keeping the Future Green

These Energy Star® compliant devices feature a quiet operation design, low CO₂ emission and power consumption of less than 1 watt in sleep mode.

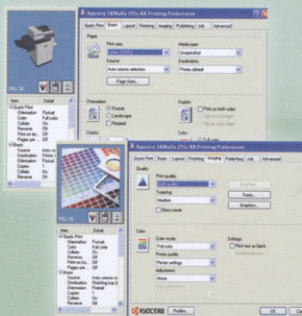
Copystar

CS 255c/205c



Simple Has Never Been So Smart

The CS 255c/205c is a cost-effective color MFP designed to meet the business demands of small to mid-size businesses. Brilliant color quality helps make a greater impact, with speeds of 25 and 20 ppm in both color and B&W; it keeps your business moving. The low total cost of ownership of these MFPs allows your business to remain on a budget, all while providing you with core multifunctional functionality in a space-saving design.



Brilliant Color on Every Page

Copystar's advanced KXDriver allows users to take full advantage of unique print features including the ability to save profiles for common jobs and advanced color settings to maximize your output quality.

